

# iberscan®

## Ready for all Conditions

iberscan® A9 is a digital portable echograph exclusively developed by **ibersan**, perfectly adapted to usage conditions on farms.



**Light**  
**Small**  
**Resistant**  
**Flexible**

### Ultra Protection

Protective  
Rubber Cover  
Impermeable  
Probe

### Color Screen

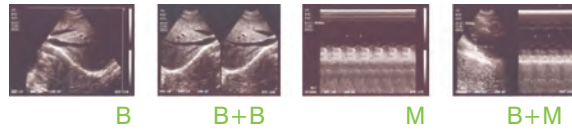
**More Autonomy** [4 hours]

**Multifrequency Probe** [2,5/3,5/5,0Mhz]



## Technical Information

Equipment	Digital portable Echograph
Model	<b>iberscan® A9</b>
Type of Probe	Multifrequency mechanical sector probe of 2,5 Mhz, 3,5Mhz and 5,0Mhz
Penetration Depth	8 zooms: 19cm, 18cm, 16cm, 14cm, 12cm, 10cm, 8cm and 6,5cm
Zoom indication	On the screen
Angle	90°
Depth marks	Each centimetre (automatic adjustment in each zoom)
Screen	TFT 5,0" LCD, with watch, date and owner identification
Resolution	640 x 480 bits with 4 available colors
Screen adjustments	Brightness, Contrast and Overall gain, Probe frequency and Screen color
Battery	Removable and rechargeable inside and outside the equipment
Battery life	4 hours in continuous working
Measurements	Distance, Circumference, Area and Heart rate
Characters Edition	Identification Number, Age and Sex
Image saving	Loading until 128 images
Battery Charger	Power of 85 to 265V, 50 to 60Hz
Low Battery Indicator	On the screen
Total weight of the echograph	800g (includes the battery)
Size	16,0cm x 12,0cm x 4,5cm
Image modes	4 modes in real time



# iberscan A9

## Equipment included:

- Impermeable probe
- Protective rubber cover
- Belt
- Removable battery
- Battery charger
- Mouse
- Bottle 250ml of echography gel **ULTRAECO**
- Operation manual



Visão global  
da produção animal

[www.ibersan.pt](http://www.ibersan.pt) | [geral@ibersan.pt](mailto:geral@ibersan.pt)

Casal Vale Medo, Apartado 68, 2534-909 Lourinhã, Portugal  
Telf.: [+351] 261 416 450 | Fax.: [+351] 261 423 389



Echograph Iberscan-A9	EXSCAN-A9
Glove for Echograph	EX96LEF